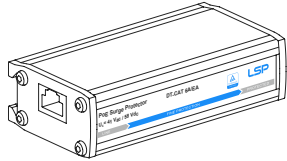


PoE Surge Protector

Installation Instructions

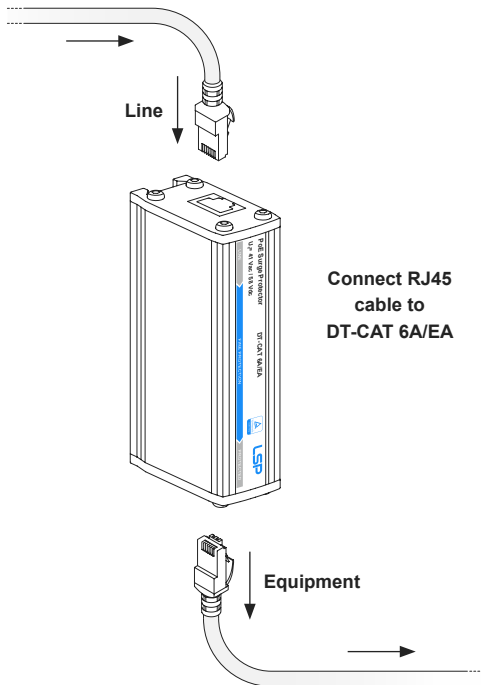
DT-CAT 6A/EA



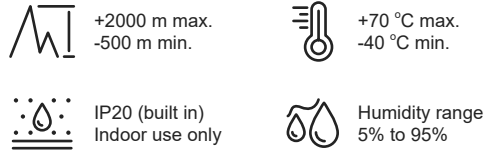
Important Notes:

- Please read this manual carefully before installing or operating the product. If you have any questions, please contact our company.
- Unauthorized disassembly of the product is strictly prohibited to prevent instrument failure or malfunctions.

Wiring



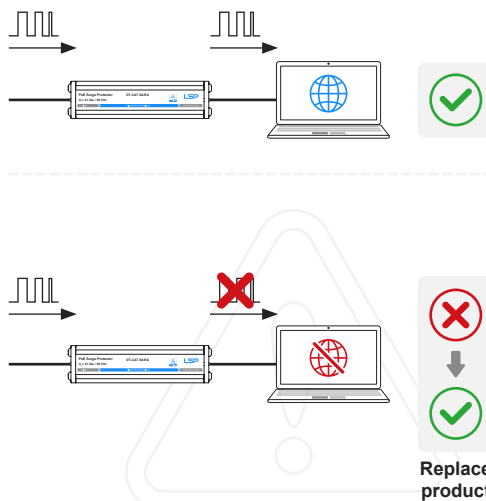
Working Conditions



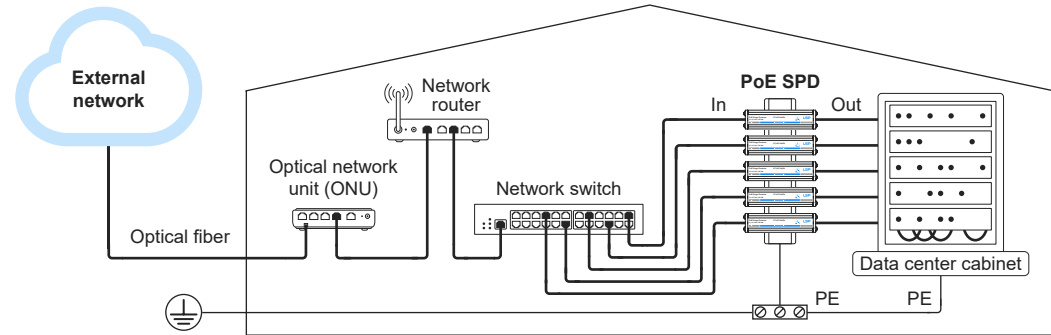
Characteristics

Max. continous voltage DC	58 V	
Max. continous voltage AC	41 V	
Load current I _L	1 A	
Nominal discharge current C2 (Line--Line)	150 A	
Nominal discharge current C2 (Total)	7 kA	
Protecionlevel up(Line--line)	120 V	
Protecionlevel up (Line--Earth)	700 V	
Umax @ C3 (10)	90 V	
Degree of protection	IP10	
Max. Frequency	500 MHz	
Channel performance	ANSI/TIA	ISO/IEC
	CAT6A	Class EA

Maintenance

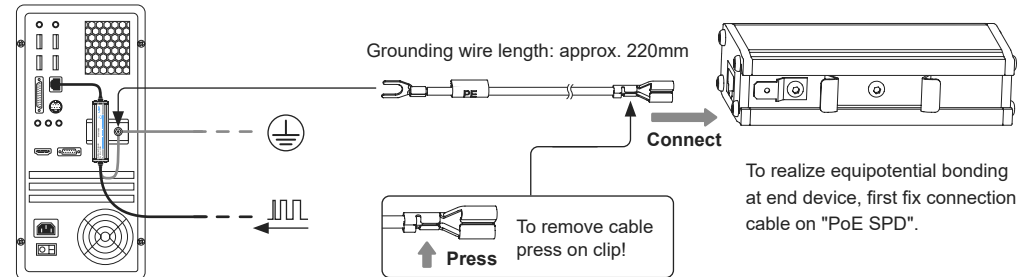


Application Example

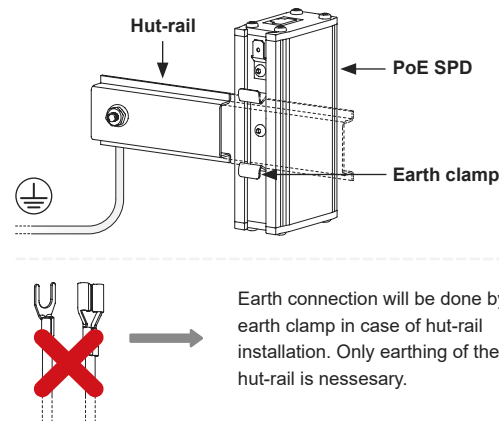


Warning: To ensure Class EA and CAT6A channel performance, all cabling and components must be high quality and comply with ISO/IEC or ANSI/TIA/EIA standards.

Protection for End Device



Connection on Hut-rail



Equipotential Bonding on Hut-rail

