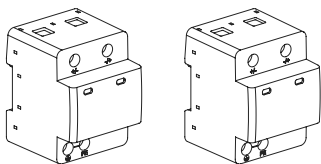


PV Surge Protective Device (SPD)

Installation Instructions

FLP-PVxxxG series



Important Notes:

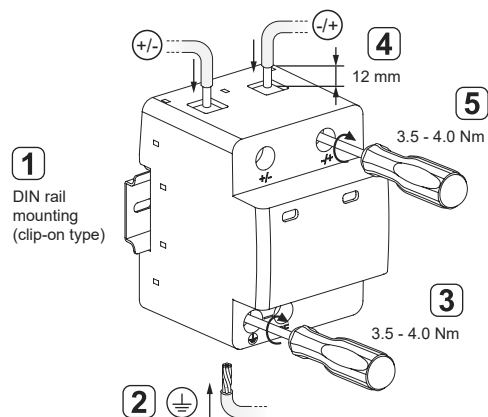
- Please read this manual carefully before installing or operating the product. If you have any questions, please contact our company.
- Unauthorized disassembly of the product is strictly prohibited to prevent instrument failure or malfunctions.

Installation

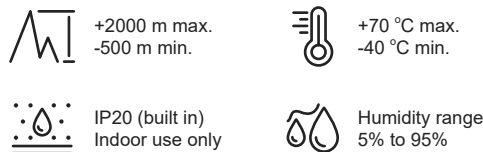
Conductor cross-section range (mm²)

Conductor function	FLP-PVxxxG
Live / Neutral wire	6 - 35
Earth wire	16 - 35
Live / Neutral wire	6 - 25
Earth wire	16 - 25

Values based on copper conductors.
Conductor size in accordance with IEC 60364-5-53.



Working Conditions

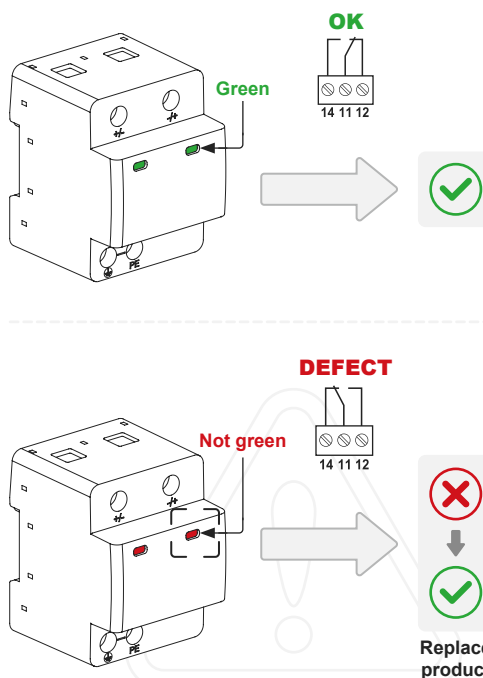


Characteristics

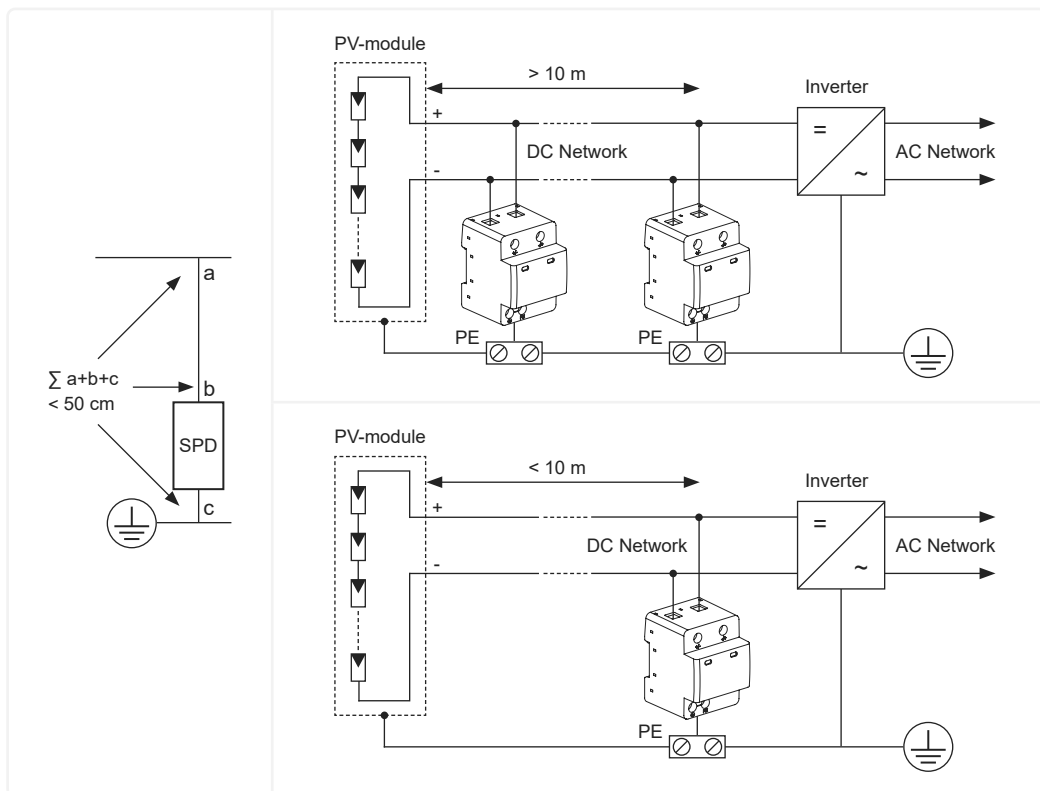
FLP-PVxxxG series	
$I_{PE, AC/DC}$	$\leq 25 \mu A$
I_{SCPv}	2 kA
I_n	20 kA
I_{max}	40 kA
I_{imp}	6.25 kA
I_{total}	12.5 kA

Remote signal option: e.g. FLP-PV100G(S)

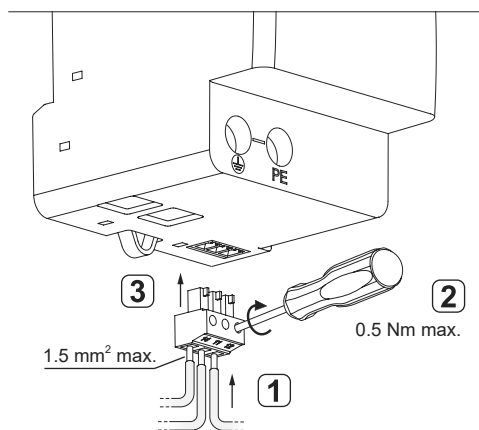
Maintenance



Standard Wiring



Remote Contact Wiring



Remote signal for disconnection information

- 11-12 Closed = SPD OK
- 11-14 Open = SPD OK
- 11-12 Open = SPD disconnect
- 11-14 Closed = SPD disconnect

Remote contact electrical ratings

- 250 Vac / 0.5 A max.
- 30 Vdc / 3 A max.