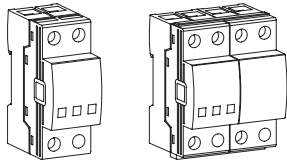


# DC Surge Protective Device (SPD)

## Installation Instructions

### FLP25-DCxxx series



#### Important Notes:

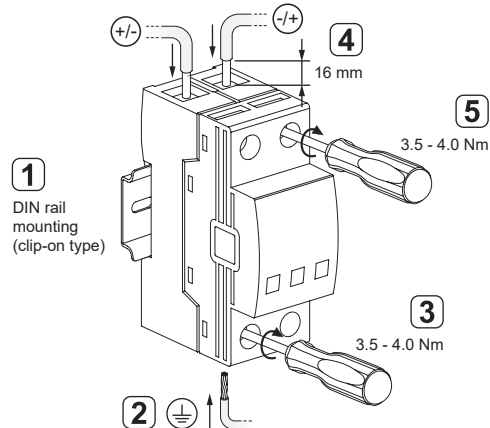
- Please read this manual carefully before installing or operating the product. If you have any questions, please contact our company.
- Unauthorized disassembly of the product is strictly prohibited to prevent instrument failure or malfunctions.

## Installation

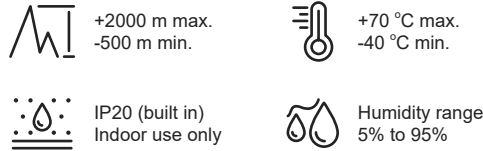
### Conductor cross-section range (mm<sup>2</sup>)

Conductor function	FLP25
Live / Neutral wire	6 - 50
Earth wire	16 - 50
Live / Neutral wire	6 - 35
Earth wire	16 - 35

Values based on copper conductors.



## Working Conditions

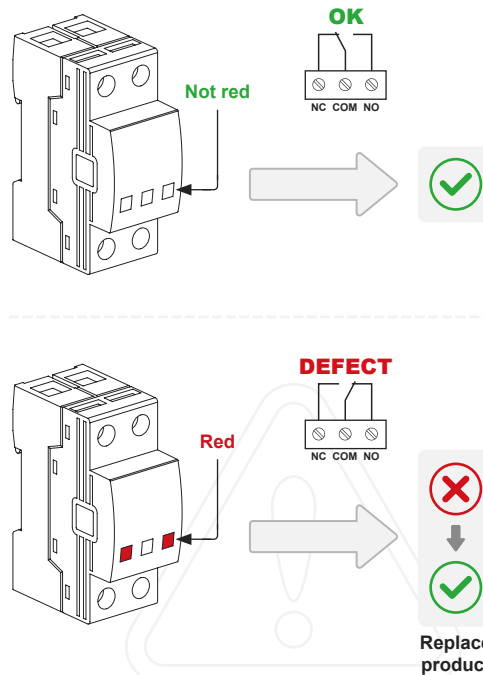


## Characteristics

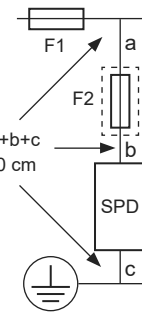
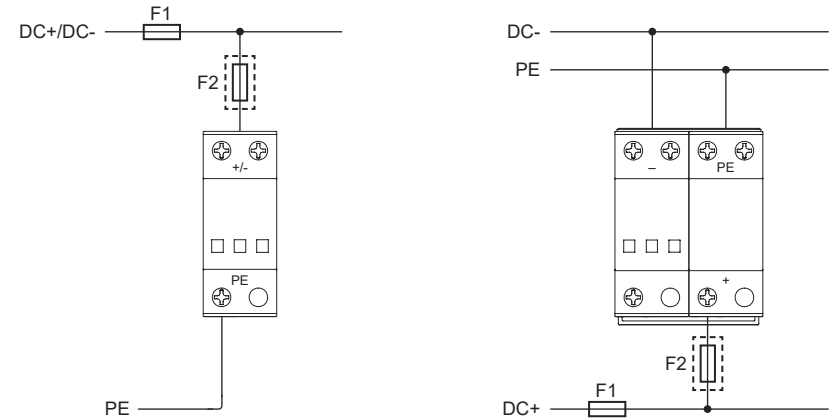
	FLP25-DC75/1(S)	FLP25-DC75/1(S)+1
$U_o / U_n$	48 Vdc	
$I_{PE}$	< 0.1 mA	without
$I_{total}$		50 kA
$I_n$	25 kA	
$I_{max}$	100 kA	
$I_{imp}$	25 kA	

Remote signal option: e.g. FLP25-DC75/1(S)

## Maintenance



## Wiring Diagram



### Fuse type: gG

$F1 > 315 A$

$F2 = 315 A$

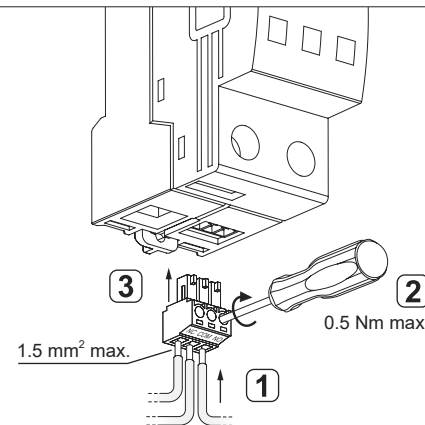
$F1 \leq 315 A$

①\*\*  
↓  
 $F2 \leq F1$

②\*\*  
↓  
No F2

\*\* For Germany both connections are mandatory: Solution ① or ②

## Remote Contact Wiring



### Remote signal for disconnection information

COM-NC Closed = SPD OK  
COM-NO Open = SPD OK

COM-NC Open = SPD disconnect  
COM-NO Closed = SPD disconnect

### Remote contact electrical ratings

250 Vac / 0.5 A max.  
30 Vdc / 3 A max.