

Automatic Transfer Switch Equipment

L2Rxx-xxx/2



- PC-Class change-over switch
- Dual power supply design: power supply I (main) and power supply II (standby)
- Supports AC systems with a rated current of 6A to 63A
- Automatic switching within 100 milliseconds
- Compliance with IEC 60947-6-1:2021

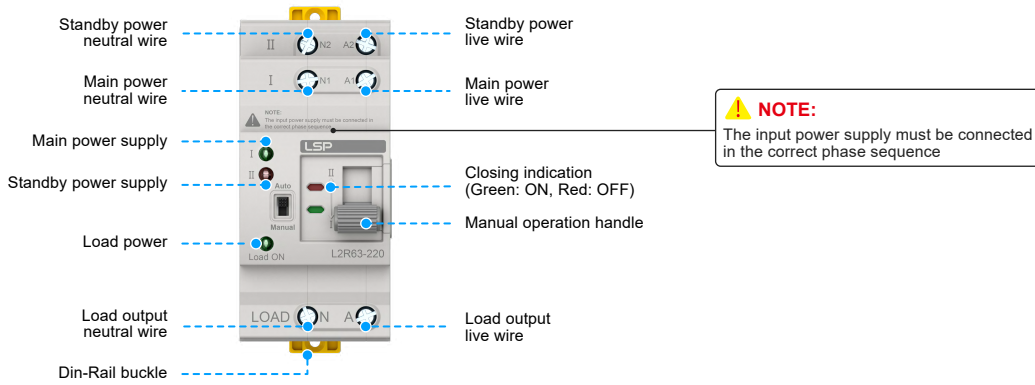
The L2R63 Automatic Transfer Switch Equipment (ATSE) is a PC-Class, infrequent change-over switch featuring a dual power supply design: power supply (I) as the main power and power supply (II) as the standby power. It supports AC systems with a rated current of 6A to 63A and a frequency range of 50/60 Hz. The ATSE automatically transfers to the standby power (II) when the main power (I) fails, with a switching time less than 100 milliseconds, ensuring effective protection against power outage disruptions.

Technical Data

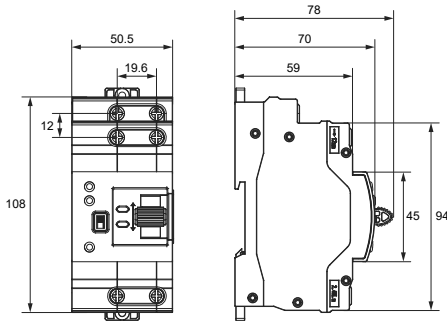
L2Rxx-xxx/2		L2R20-110/2	L2R40-110/2	L2R63-110/2	L2R20-220/2	L2R40-220/2	L2R63-220/2
IEC Electrical							
Rated Operational Voltage (AC)	U _e	110 V	110 V	110 V	220 V	220 V	220 V
Case Grade		63 A					
Rated Operational Current	I _e	20 A	40 A	63 A	20 A	40 A	63 A
Rated Insulation Voltage (AC)	U _i	690 V					
Rated Impulse Withstand Voltage	U _{imp}	8 kV					
Rated Frequency		50/60 Hz					
Automatic Switching Time		≤ 100 ms					
Pole Number		2P					
Usage Category		AC-31B					
Rated Conditional Short-Circuit Current	I _q	50 kA					
Short-Circuit Protection Device (Fuse)		RT16-00-63A					
Rated Impulse Withstand Voltage		8 kV					
TSE Class		PC-Class: Can Be Switched On and Loaded Without Generating Short-Circuit Current					
Control Circuit		Rated Control Voltage Us: AC 110 V / 230 V, 50/60 Hz Normal Working Conditions: 85% Us-110% Us					
Auxiliary Circuit		110 V / 230 V, 50/60 Hz, I _e =5 A					
Overvoltage / Undervoltage Protection Range		Undervoltage Value: 85 V Recovery Value: 95 V Overvoltage Value: 145 V Recovery Value: 130 V (± 5 V)			Undervoltage Value: 175 V Recovery Value: 195 V Overvoltage Value: 260 V Recovery Value: 240 V (± 5 V)		
Mechanical Life		≥ 8000 Times					
Electrical Life		≥ 1500 Times					
Enclosure Material		PA66 FR					
Order Information							
Ordering Code							
L2Rxx-xxx/2		2001210	4001210	6301210	2002210	4002210	6302210



Wiring Instructions



Dimensions & Packaging

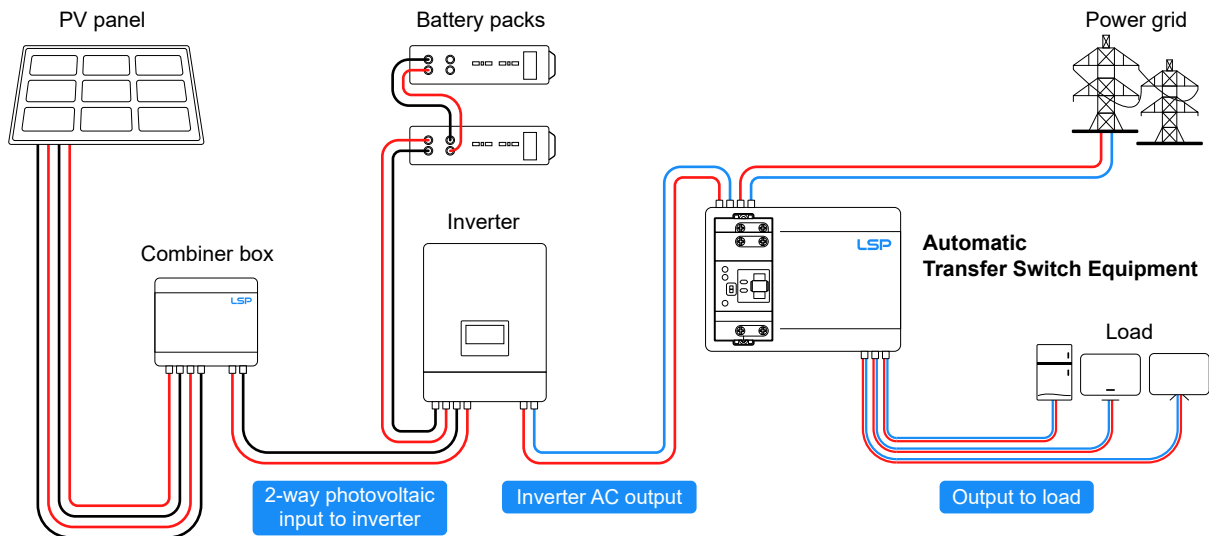


[mm]

Packing Information

Units per Carton	48 pcs
Product / Inner box / Carton Weight	0.355 kg / 0.04 kg / 0.49 kg
Net / Gross Weight per Carton	17.04 kg / 19.45 kg
Dimensions (H × W × L)	[275 × 265 × 470 mm]

Easy Installation Instructions



Automatic Transfer Switch Equipment L2Rxx-xxx/4



- PC-Class change-over switch
- Dual power supply design: power supply I (main) and power supply II (standby)
- Supports AC systems with a rated current of 6A to 63A
- Automatic switching within 100 milliseconds
- Compliance with IEC 60947-6-1:2021

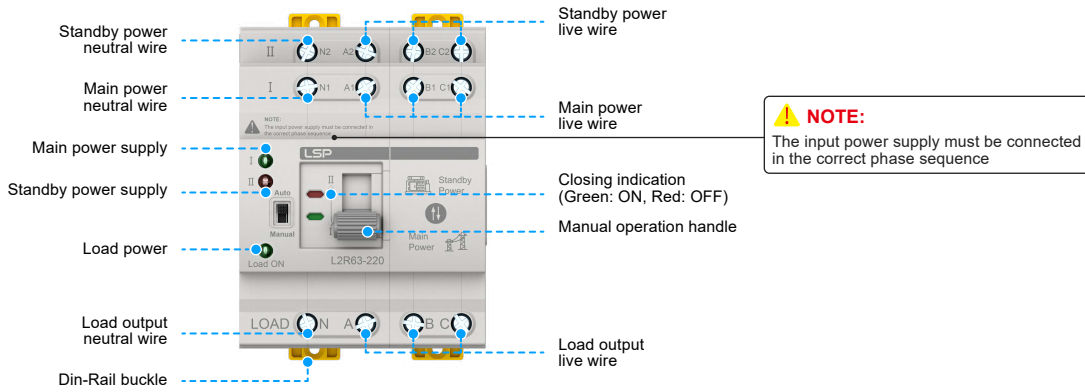
The L2R63 Automatic Transfer Switch Equipment (ATSE) is a PC-Class, infrequent change-over switch featuring a dual power supply design: power supply (I) as the main power and power supply (II) as the standby power. It supports AC systems with a rated current of 6A to 63A and a frequency range of 50/60 Hz. The ATSE automatically transfers to the standby power (II) when the main power (I) fails, with a switching time less than 100 milliseconds, ensuring effective protection against power outage disruptions.

Technical Data

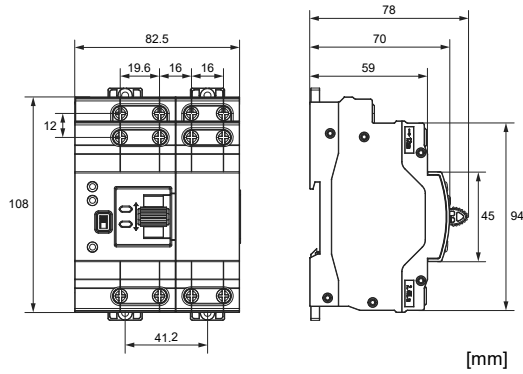
L2Rxx-xxx/4		L2R20-110/4	L2R40-110/4	L2R63-110/4	L2R20-220/4	L2R40-220/4	L2R63-220/4
IEC Electrical							
Single-Phase Rated Voltage (phase-to-neutral) (AC)		110 V	110 V	110 V	220 V	220 V	220 V
Rated Operational Voltage (phase-to-phase) (AC)	U _e	200 V	200 V	200 V	400 V	400 V	400 V
Case Grade		63 A					
Rated Operational Current	I _e	20 A	40 A	63 A	20 A	40 A	63 A
Rated Insulation Voltage (AC)	U _i	690 V					
Rated Impulse Withstand Voltage	U _{imp}	8 kV					
Rated Frequency		50/60 Hz					
Automatic Switching Time		≤ 100 ms					
Pole Number		4P					
Usage Category		AC-31B					
Rated Conditional Short-Circuit Current	I _q	50 kA					
Short-Circuit Protection Device (Fuse)		RT16-00-63A					
Rated Impulse Withstand Voltage		8 kV					
TSE Class		PC-Class: Can Be Switched On and Loaded Without Generating Short-Circuit Current					
Control Circuit		Rated Control Voltage Us: AC 110 V / 230 V, 50/60 Hz Normal Working Conditions: 85% Us-110% Us					
Auxiliary Circuit		110 V / 230 V, 50/60 Hz, I _e =5 A					
Overvoltage / Undervoltage Protection Range		Undervoltage Value: 85 V Recovery Value: 95 V Overvoltage Value: 145 V Recovery Value: 130 V (± 5 V)			Undervoltage Value: 175 V Recovery Value: 195 V Overvoltage Value: 260 V Recovery Value: 240 V (± 5 V)		
Mechanical Life		≥ 8000 Times					
Electrical Life		≥ 1500 Times					
Enclosure Material		PA66 FR					
Order Information							
Ordering Code							
L2Rxx-xxx4		2001410	4001410	6301410	2002410	4002410	6302410



Wiring Instructions



Dimensions & Packaging



Packing Information

Units per Carton	30 pcs
Product / Inner box / Carton Weight	0.54 kg / 0.05 kg / 0.49 kg
Net / Gross Weight per Carton	16.2 kg / 18.19 kg
Dimensions (H × W × L)	[275 × 265 × 470 mm]

Easy Installation Instructions

